



**Beaufort County Public Works**  
**Stormwater Infrastructure**  
*Project Summary*

**Project Summary:** Central Drive, E River Drive, Windy Point Drive and W River Drive

**Activity:** Routine/Preventive Maintenance

**Duration:** 01/08/19-02/07/19

**Narrative Description of Project:**

Project improved 6,040 L.F. of drainage system. Cleaned out 5,840 L.F. of roadside ditch and (2) catch basins. Jetted (57) driveway pipes, (6) crossline pipes, (3) access pipes, 30 L.F. of channel pipe and 170 L.F. of roadside pipe. Hydroseeded for erosion control.

**2019-532 / Central Dr., W. River Dr. & E River Dr.**

	<b>Labor Hours</b>	<b>Labor Cost</b>	<b>Equipment Cost</b>	<b>Material Cost</b>	<b>Contractor Cost</b>	<b>Indirect Labor</b>	<b>Total Cost</b>
APJT / Access pipe - jetted	20.0	\$445.60	\$383.20	\$65.84	\$0.00	\$286.80	\$1,181.44
AUDIT / Audit Project	1.5	\$32.69	\$0.00	\$0.00	\$0.00	\$0.00	\$32.69
CBCO / Catch basin - clean out	20.0	\$445.60	\$383.20	\$83.76	\$0.00	\$286.80	\$1,199.36
CCO / Channel - cleaned out	12.0	\$267.32	\$71.66	\$12.75	\$0.00	\$171.72	\$523.45
CLPJT / Crossline Pipe - Jetted	20.0	\$445.60	\$383.20	\$55.84	\$0.00	\$286.80	\$1,171.44
DPJT / Driveway Pipe - Jetted	50.0	\$1,114.00	\$958.00	\$144.18	\$0.00	\$717.00	\$2,933.18
SPSWI / Special Project - SWI	6.0	\$144.54	\$11.52	\$14.08	\$0.00	\$82.95	\$253.09
HAUL / Hauling	228.0	\$4,871.96	\$3,301.04	\$1,675.67	\$0.00	\$1,508.15	\$11,356.82
HYDR / Hydroseeding	8.0	\$183.08	\$51.72	\$1,574.46	\$0.00	\$118.80	\$1,928.06
RSDCL / Roadside Ditch - Cleanout	487.5	\$13,224.72	\$2,227.24	\$517.30	\$0.00	\$4,788.30	\$20,757.56
UTLOC / Utility locates	28.5	\$806.15	\$26.88	\$21.12	\$0.00	\$294.24	\$1,148.39
2019-532 / Central Dr., W. River Dr.& E River Dr. Sub Total	881.5	\$21,981.26	\$7,797.66	\$4,164.99	\$0.00	\$8,541.56	\$42,485.47
<b>Grand Total</b>	<b>881.5</b>	<b>\$21,981.26</b>	<b>\$7,797.66</b>	<b>\$4,164.99</b>	<b>\$0.00</b>	<b>\$8,541.56</b>	<b>\$42,485.47</b>

**Before**



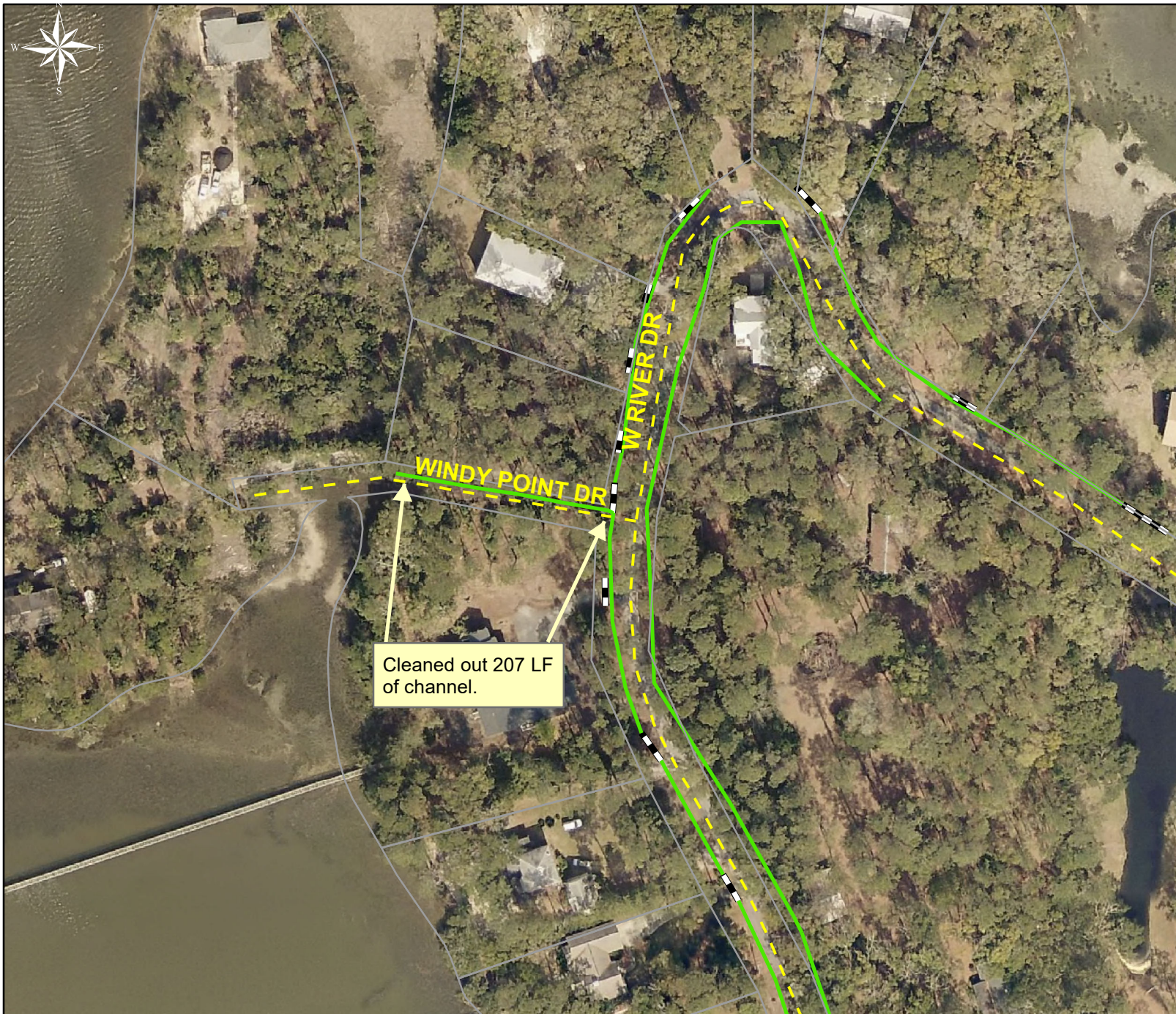
**During**



**After**







Project: Central Drive-Windy Point Dr Map #1

Activity: Routine/ Preventive Maintenance

Project #: 2019-532

Township/SW Dist: Lady's Island/7

Completed: February 2019

### Legend

#### Drainage Type

- Access Pipe
- Bleeder Pipe
- Channel Pipe
- Channel
- Stream
- Crossline Pipe
- Driveway Pipe
- Lateral
- Lateral Pipe
- River
- Road Pipe
- Roadside
- Roadside Pipe

0 30 60 120 180 240 Feet

1 inch = 130 feet

Prepared By: BC Stormwater Management Utility

Date Print: 06/06/19

File: C:\project summaries map\Central Drive-Windy point Dr Map #1\_2019-546





Project: Central Drive Map #2

Activity: Routine/ Preventive Maintenance

Project #: 2019-532

Township/SW Dist: Lady's Island/7

Completed: February 2019

### Legend

#### Drainage Type

- Access Pipe
- Bleeder Pipe
- Channel Pipe
- Channel
- Stream
- Crossline Pipe
- Driveway Pipe
- Lateral
- Lateral Pipe
- River
- Road Pipe
- Roadside
- Roadside Pipe

0 30 60 120 180 240  
Feet

1 inch = 130 feet

Prepared By: BC Stormwater Management Utility  
Date Print: 06/06/19  
File: C:\project summaries map\Central Drive Map #2\_2019-546





Project: Central  
Drive Map #3

Activity: Routine/  
Preventive  
Maintenance

Project #:  
2019-532

Township/SW Dist:  
Lady's Island/7

Completed:  
February 2019

### Legend

#### Drainage Type

- Access Pipe
- Bleeder Pipe
- Channel Pipe
- Channel
- Stream
- Crossline Pipe
- Driveway Pipe
- Lateral
- Lateral Pipe
- River
- Road Pipe
- Roadside
- Roadside Pipe

0 40 80 160 240 320  
Feet

1 inch = 170 feet

Prepared By: BC Stormwater Management Utility  
Date Print: 06/06/19  
File: C:\project summaries map\Central Drive Map #3\_2019-546





Project: Central Drive,  
E River Drive, Windy  
Point Drive and W  
River Drive Map #4

Activity: Routine/  
Preventive  
Maintenance

Project #:  
2019-532

Township/SW Dist:  
Lady's Island/7

Completed:  
February 2019

### Legend

#### Drainage Type

- Access Pipe
- Bleeder Pipe
- Channel Pipe
- Channel
- Stream
- Crossline Pipe
- Driveway Pipe
- Lateral
- Lateral Pipe
- River
- Road Pipe
- Roadside
- Roadside Pipe

0 15 30 60 90 120  
Feet

1 inch = 67 feet

Prepared By: BC Stormwater Management Utility

Date Print: 06/13/19

File: C:\project summaries map\Central Drive- W River Drive Map #4\_2019-532





Project: Central Drive, E River Drive, Windy Point Drive and W River Drive Map #5

Activity: Routine/ Preventive Maintenance

Project #: 2019-532

Township/SW Dist: Lady's Island/7

Completed: February 2019

### Legend

#### Drainage Type

- Access Pipe
- Bleeder Pipe
- Channel Pipe
- Channel
- Stream
- Crossline Pipe
- Driveway Pipe
- Lateral
- Lateral Pipe
- River
- Road Pipe
- Roadside
- Roadside Pipe

0 60 120 240 360 480 Feet

1 inch = 250 feet

Prepared By: BC Stormwater Management Utility

Date Print:06/13/19

File:C:\project summaries map/Central Drive- W River Drive Map #5\_2019-532





Project: Central Drive,  
E River Drive, Windy  
Point Drive and E  
River Drive Map #6

Activity: Routine/  
Preventive  
Maintenance

Project #:  
2019-532

Township/SW Dist:  
Lady's Island/7

Completed:  
February 2019

### Legend

#### Drainage Type

- Access Pipe
- Bleeder Pipe
- Channel Pipe
- Channel
- Stream
- Crossline Pipe
- Driveway Pipe
- Lateral
- Lateral Pipe
- River
- Road Pipe
- Roadside
- Roadside Pipe

0 60 120 240 360 480  
Feet

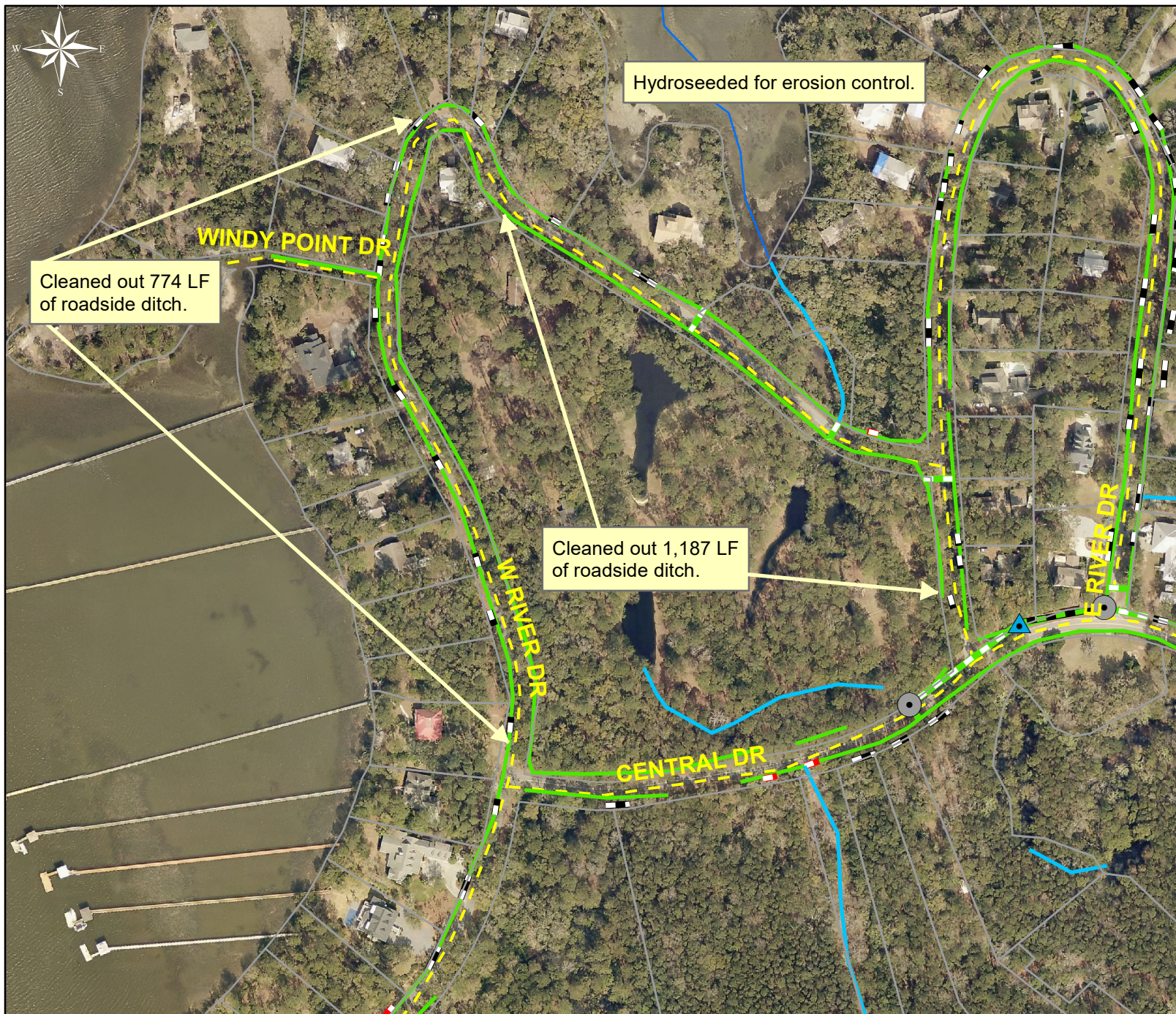
1 inch = 250 feet

Prepared By: BC Stormwater Management Utility

Date Print: 06/13/19

File: C:\project summaries map\Central Drive- W River Drive Map #6\_2019-546





Project: Central Drive,  
E River Drive, Windy  
Point Drive and W  
River Drive  
Map #7

Activity: Routine/  
Preventive  
Maintenance

Project #:  
2019-532

Township/SW Dist:  
Lady's Island/7

Completed:  
February 2019

### Legend

#### Drainage Type

- Access Pipe
- Bleeder Pipe
- Channel Pipe
- Channel
- Stream
- Crossline Pipe
- Driveway Pipe
- Lateral
- Lateral Pipe
- River
- Road Pipe
- Roadside
- Roadside Pipe

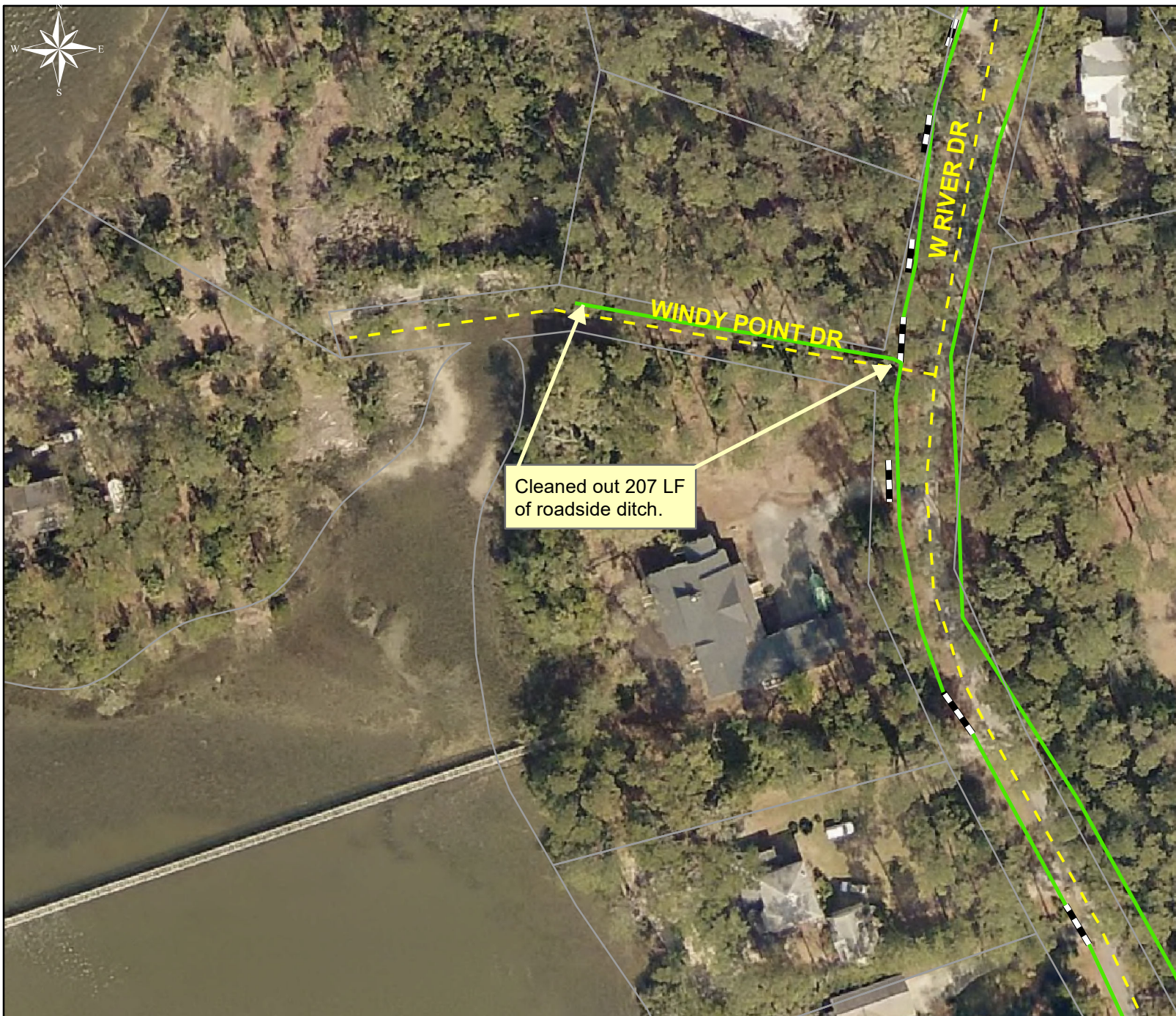
0 60 120 240 360 480  
Feet

1 inch = 250 feet

Prepared By: BC Stormwater Management Utility  
Date Print: 06/13/19

File: C:\project summaries map\Central Drive- W River Drive Map #7\_2019-532





Project: Central Drive,  
E River Drive, Windy  
Point Drive and W  
River Drive Map #8

Activity: Routine/  
Preventive  
Maintenance














Project #:  
2019-532

Township/SW Dist:  
Lady's Island/7

Completed:  
February 2019

### Legend

#### Drainage Type

-  Access Pipe
-  Bleeder Pipe
-  Channel Pipe
-  Channel
-  Stream
-  Crossline Pipe
-  Driveway Pipe
-  Lateral
-  Lateral Pipe
-  River
-  Road Pipe
-  Roadside
-  Roadside Pipe

0 20 40 80 120 160  
Feet

1 inch = 83 feet

Prepared By: BC Stormwater Management Utility

Date Print: 06/13/19

File: C:\project summaries map\Central Drive- Windy Point Drive Map #8\_2019-532





Project: Central Drive,  
E River Drive, Windy  
Point Drive and W  
River Drive Map #9

Activity: Routine/  
Preventive  
Maintenance

Project #:  
2019-532

Township/SW Dist:  
Lady's Island/7

Completed:  
February 2019

### Legend

#### Drainage Type

- Access Pipe
- Bleeder Pipe
- Channel Pipe
- Channel
- Stream
- Crossline Pipe
- Driveway Pipe
- Lateral
- Lateral Pipe
- River
- Road Pipe
- Roadside
- Roadside Pipe

0 60 120 240 360 480  
Feet

1 inch = 250 feet

Prepared By: BC Stormwater Management Utility

Date Print: 06/13/19

File: C:\project summaries map\Central Drive- W River Drive Map #9\_2019-532